



# **Umpire Education Module**

## *2025 User Guide*

# Introduction

---



To support the ongoing education and development of umpires across Australia, the AFL provides an annual education module for umpires and umpire coaches to complete as part of umpire & umpire coach participation for the 2025 season.

Following on from the introduction of Umpire Education Modules last season, umpires and umpire coaches will need to complete the 2025 Umpire Education Module ahead of the 2025 season. The Umpire Education Module topic is Vilification & Discrimination and will take approximately 30 minutes to complete.

The AFL Learning Management System will host the module. The AFL will communicate directly to all umpires and umpire coaches with a series of eDM's and user guide.

All umpires and umpire coaches will be required to complete their education module prior to being appointed to matches. Once the Education Module has been completed, the umpire / umpire coach will then become available for appointments. Any umpire or umpire coach who has not completed their education module will not be available for appointments until their education module is completed.


# Access your OfficialsHQ account



Access your OfficialsHQ account  
via the OfficialsHQ website [HERE](#)

Enter your login details.



 OFFICIALSHQ

@

Email

☒ Remember my login

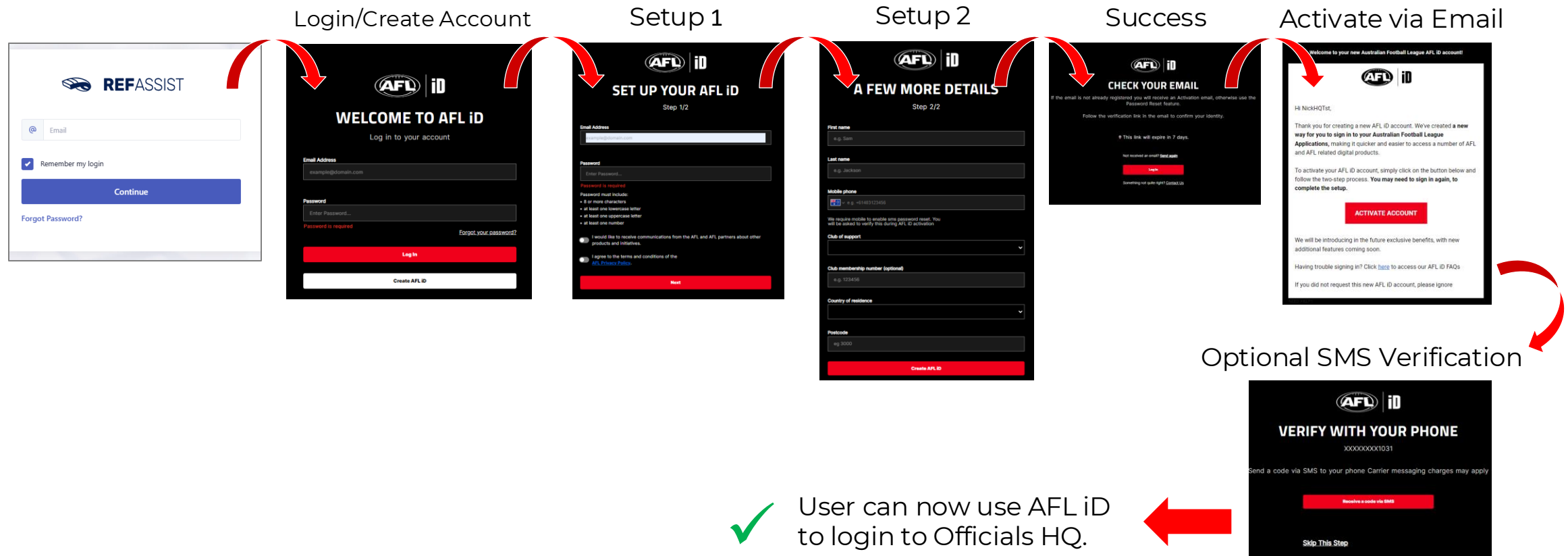
Continue

[Forgot Password?](#)

# Creating an AFL iD (new or returning)



- **New Umpires** will need to create their AFLiD post registering on OfficialsHQ.
- **Returning Umpires** will need to create their AFL iD when they first access OfficialsHQ post November 1 2024.



# New Umpire AFL iD Process



- New Umpires** will need to first register on OfficialsHQ, then proceed with creating and AFL iD and linking their OHQ account as a one-off requirement.

Register for OfficialsHQ

OfficialsHQ registration

If you already have a PlayHQ account, go here to login

OfficialsHQ

Welcome to OfficialsHQ, world's leading platform that makes umpire and official management, planning, communication, and follow-up a walk in the park.

If you are a parent/guardian registering a child, please include their details on the Official's details page and your contact details on the Emergency Contact page.

You are about to register to OfficialsHQ and its website. Please follow the steps and complete the registration.

1. Official's information

Email \*

First name \* Last name \*

Date of birth \* Gender \*

Male

Next

Register for OfficialsHQ

1. Official's information

First name \* Last name \*

Date of birth \* Gender \*

Male

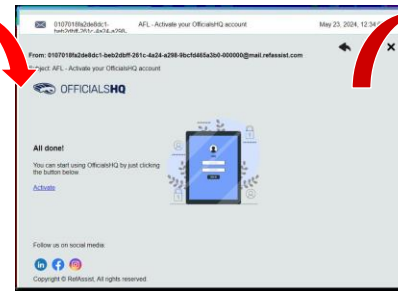
Password \*

Use 8 or more characters with a mix of letters, numbers & symbols.

Repeat password \*

Next

Activate OHQ Account



Enter OHQ Email

REFASSIST

Email

☒ Remember my login

Continue

Forgot Password?

Login/Create AFL iD

AFL iD

WELCOME TO AFL iD

Log in to your account

Email Address

example@domain.com

Password

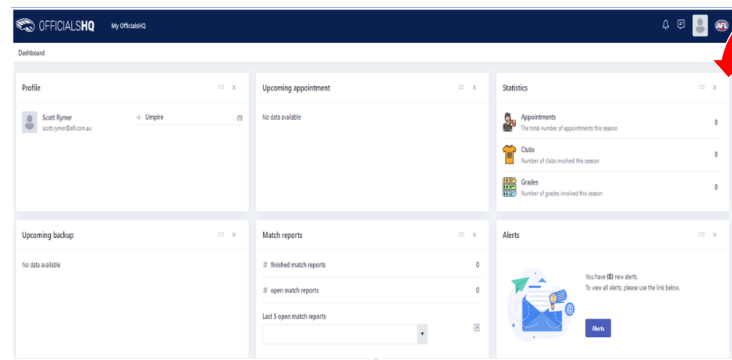
Enter Password...

Password is required

Forgot your password?

Log in

Create AFL iD



OHQ Dashboard

Request to link your AFL iD

Click the button below to link your AFL iD to OfficialsHQ

The link will remain active for 72 hours.

Link to AFL iD

Link OHQ & AFLiD

OfficialsHQ

Your AFL iD is currently not linked with OfficialsHQ

In order to proceed, click the button below and an email with further instructions will be sent to

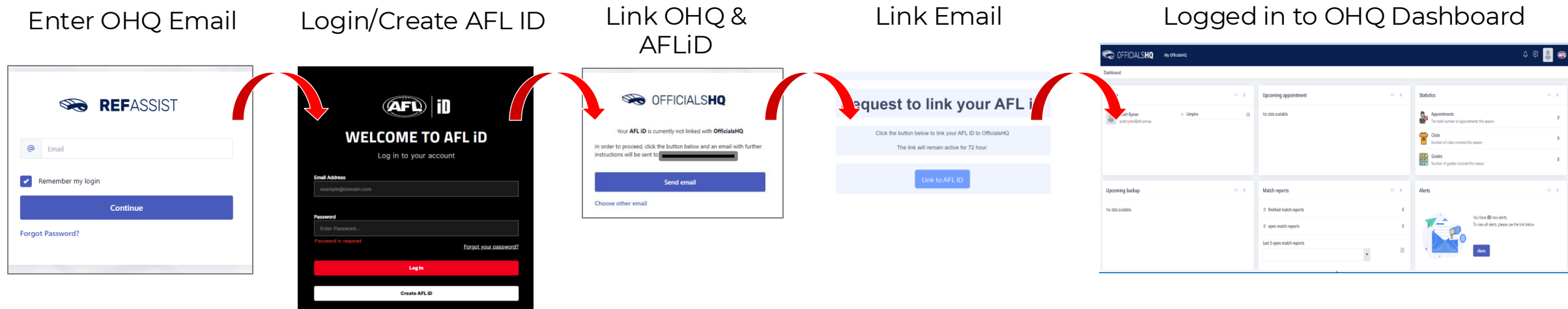
Send email

Choose other email

# Returning Umpire AFL iD Process



- **Returning Umpires** will need to go to their OfficialsHQ profile, enter their email, create / login with AFL iD & link their OHQ account as a one-off requirement.

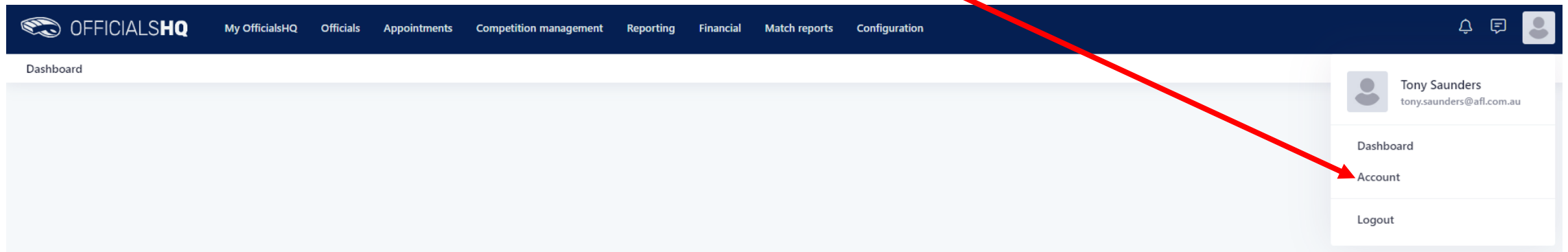


# OfficialsHQ Account



Once the umpire has setup and linked their AFL iD, they can access the Umpire Education Module.

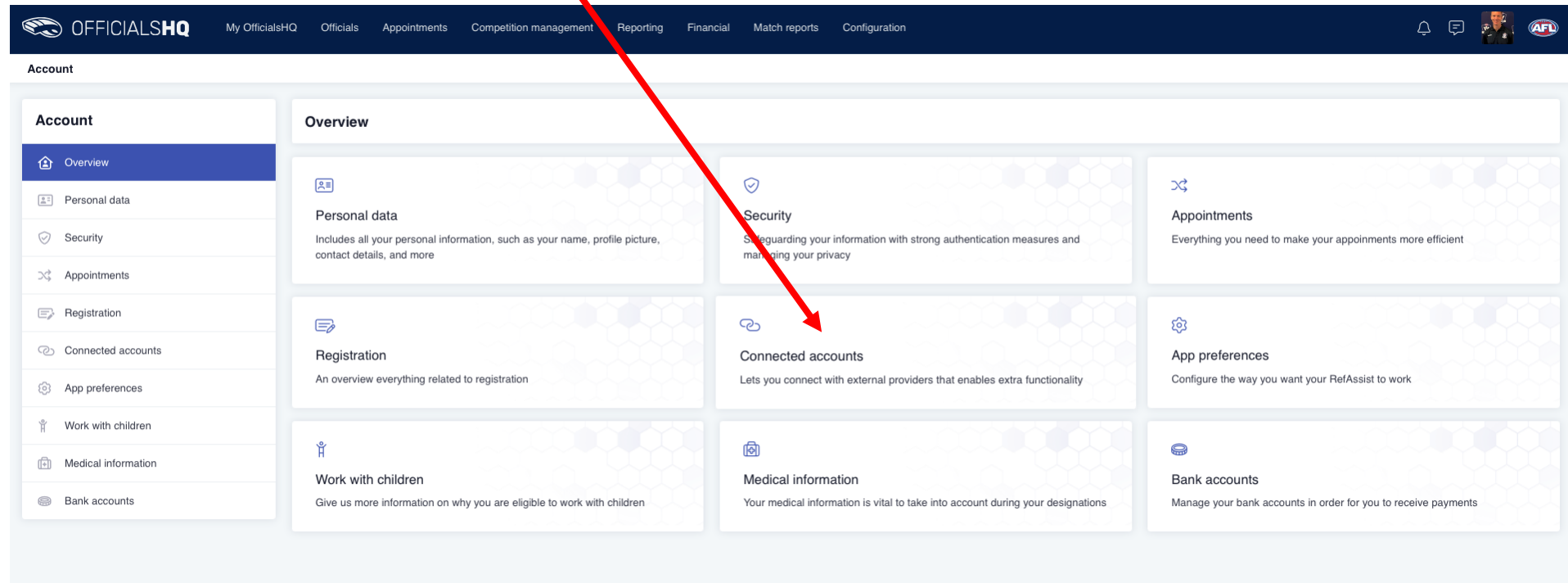
In top right corner click on name and select **Account**



# Generate Link



When in profile overview select **Connected Accounts** and click the **Get e-learning link** button.





# Access to LMS Account



Click the 'Go to e-learning platform' to access the learning platform. If you do not have an AFL LMS account, click on 'Go to e-learning platform' and create a profile

A screenshot of the OFFICIALSHQ dashboard. The top navigation bar is dark blue with the OFFICIALSHQ logo and several menu items: My OfficialsHQ, Officials, Appointments, Competition management, Reporting, Financial, Match reports, and Configuration. On the right of the navigation bar are a bell icon, a chat icon, and a user profile picture. Below the navigation bar, the 'Account' section is active. On the left, a 'Menu' sidebar lists 'Avatar', 'Password', 'E-learning' (highlighted in blue), and 'App preferences'. The main content area is titled 'E-learning' and contains the heading 'Umpire AFL LMS - Online Learning Platform'. Below this heading is a paragraph explaining that users need to complete accreditation by fulfilling an online course in the LMS. At the bottom of this section are two buttons: 'Get e-learning link' and 'Go to e-learning platform'. A red arrow points from the text above to the 'Go to e-learning platform' button.

# Unable To Generate Link



If the you already have an AFL LMS account and are unable to generate link, you will be advised to contact the AFL Customer Service team who will be able to assist.

Being unable to generate a link may be caused by different user fields in the umpire OfficialsHQ and / or the LMS profile e.g. email, name,

The AFL Customer Service team will be able to assist any umpire or umpire coach, please contact [umpire.afl@afl.com.au](mailto:umpire.afl@afl.com.au) or call 1800 PLAYAFL

OFFICIALSHQ

My OfficialsHQOfficialsAppointmentsCompetition managementReportingFinancialMatch reportsConfiguration

Account

Menu

Avatar

Password

E-learning

App preferences

E-learning

Umpire AFL LMS - Online Learning Platform

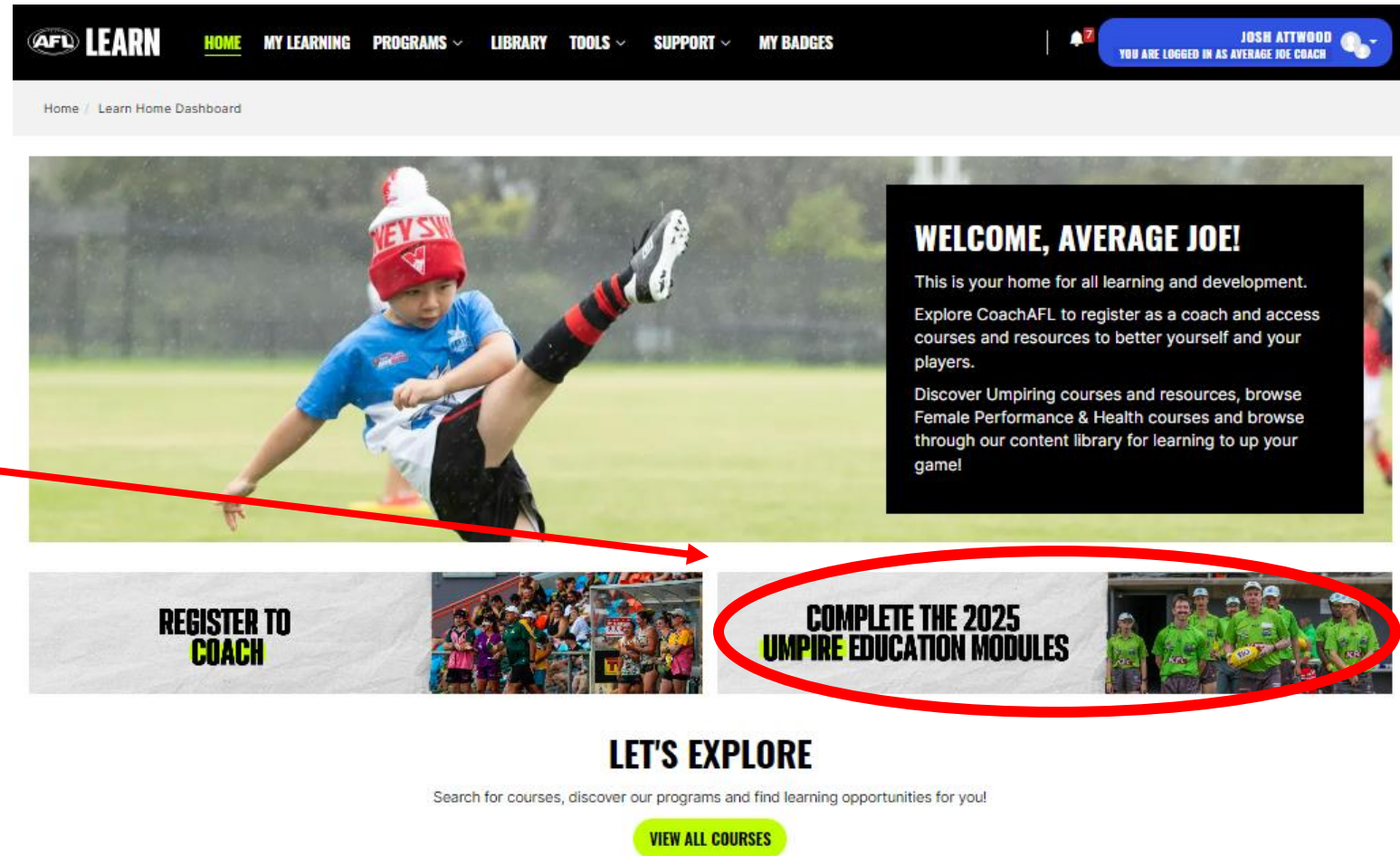
To complete registration and to be appointable for games, you need to complete your accreditation by fulfilling an online course in the LMS (learning management system) of the AFL. Please click to generate a link to login to the LMS and start the accreditation.

Get e-learning link

We are currently unable to generate an LMS link for you. Please contact [umpire.afl@afl.com.au](mailto:umpire.afl@afl.com.au) for support in resolving this issue

# LMS Dashboard

Once you enter the LMS via OfficialsHQ, click on 'Complete The Umpire Education Modules' tile to commence the module.



**AFL LEARN** **HOME** MY LEARNING PROGRAMS ▾ LIBRARY TOOLS ▾ SUPPORT ▾ MY BADGES

Home / Learn Home Dashboard

**WELCOME, AVERAGE JOE!**

This is your home for all learning and development.

Explore CoachAFL to register as a coach and access courses and resources to better yourself and your players.

Discover Umpiring courses and resources, browse Female Performance & Health courses and browse through our content library for learning to up your game!

**REGISTER TO COACH**

**COMPLETE THE 2025 UMPIRE EDUCATION MODULES**

**LET'S EXPLORE**

Search for courses, discover our programs and find learning opportunities for you!

**VIEW ALL COURSES**

# Select Education Module Package



Now enroll into the Umpire Education Package



## 2025 UMPIRE EDUCATION PACKAGE

This education package is for all **umpires and umpire coaches** that are registered to umpire for the 2025 community football season.

This package includes one module on the topic:

- Vilification & Discrimination in Football

This package should take approximately 30 minutes for you to complete and is a mandatory part of your community umpire registration.

**ENROL NOW**

# Complete Module Content



Once enrolled, you can access the course and complete their education modules.

Please note, you can return later at any time to complete the remaining modules.

The screenshot displays the 'AFL LEARN' website. The top navigation bar includes links for HOME, MY LEARNING, PROGRAMS, LIBRARY, TOOLS, SUPPORT, and MY BADGES. A user profile for 'JOSH ATTWOOD' is visible in the top right corner, indicating the user is logged in as 'AS AVERAGE JOE COACH'. Below the navigation bar, the breadcrumb trail reads 'Home / My courses / 2025 Umpire Education Package'. The main content area features a large video thumbnail titled '2025 UMPIRE EDUCATION PACKAGE' with the text 'Click the first tile below to begin!'. Below this, there are two smaller video thumbnails: 'Welcome to Umpiring in 2025' and 'Vilification & Discrimination'. Both thumbnails have a green play button icon in the bottom right corner.



# Module Completion



Once the education module is completed the 'Congratulations Course Complete' tile will appear, you can then obtain a course certificate.

The screenshot displays the AFL LEARN website interface. The top navigation bar includes links for HOME, MY LEARNING, PROGRAMS, LIBRARY, TOOLS, SUPPORT, and MY BADGES. A user profile for JOSH ATTWOOD is visible in the top right corner, indicating the user is logged in as AS AVERAGE JOE COACH. Below the navigation bar, the breadcrumb trail shows: Home / My courses / 2025 Umpire Education Package.

The main content area features a large image of a group of umpires in yellow shirts on a field. Overlaid on this image is the text: **2025 UMPIRE EDUCATION PACKAGE** and **Click the first tile below to begin!**. Below this image are three smaller tiles, each with a right-pointing arrow:

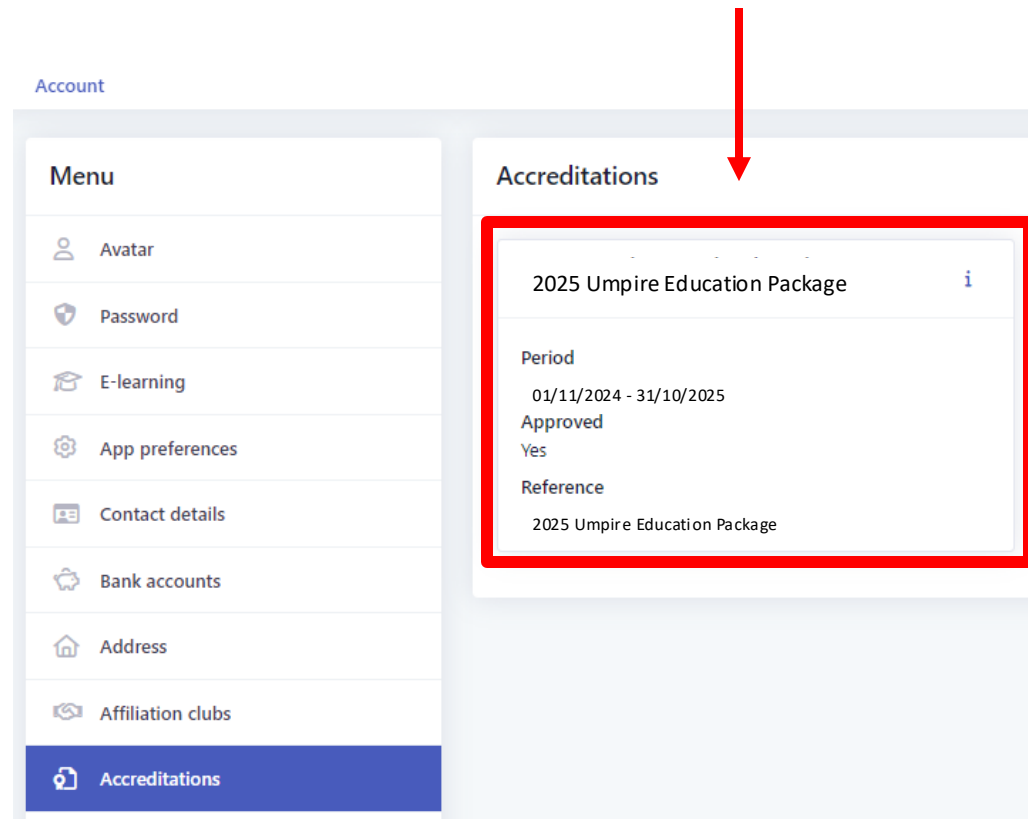
- Welcome to Umpiring in 2025**: The image shows a close-up of hands holding a red football.
- Vilification & Discrimination**: The image shows an umpire in a yellow shirt gesturing on the field.
- Congratulations! Course Complete**: The image shows an umpire in a yellow shirt holding a white flag.

A red arrow originates from the text "Once the education module is completed the 'Congratulations Course Complete' tile will appear, you can then obtain a course certificate." and points directly to the "Congratulations! Course Complete" tile.

# Profile Update



Following the completion of the education module, the education package completion will be reflected in your OfficialsHQ account. Please note, this may take 24hrs to occur.



# FAQ's

---



**1. Does the education module apply to all umpires and umpire coaches?**

*Yes, the AFL has designed the education modules to support all umpires and umpire coaches across Australia.*

**2. Can I be appointed to matches without completing the education module?**

*No, all umpires and umpire coaches must have completed the 2025 education module to be eligible for appointments. It is important for umpires and umpire coaches to complete the module well ahead of the start of their season.*

**3. If I umpire in another State or Territory, will I need to do the education module again?**

*No, umpires and umpire coaches will complete the same educational content nationally and will only need to complete the module once per year.*

**4. Will I need to complete education modules again in future seasons?**

*Yes, the education module will become an annual process with different educational topics explored each year.*

**5. Is the education module an umpire or umpire coach accreditation?**

*No, the education module is not an accreditation, however the AFL is currently developing a new accreditation framework for umpires and umpire coaches. More information will be shared in the coming months.*

**6. If I'm an umpire who is under 18 years, do I complete a different education module like last season?**

*No, all umpires regardless of age will complete the same Vilification & Discrimination education module this season.*

**7. If I'm having issues with my OfficialsHQ account, AFLiD or AFL LMS account that prevents me from completing the module, who do I contact?**

The AFL Customer Service team will be able to assist any umpire or umpire coach, please contact [umpire.afl@afl.com.au](mailto:umpire.afl@afl.com.au) or call 1800 PLAYAFL